

DRAGON DRESSING GOWN

SKILL LEVEL: ADVANCED BEGINNER

Who doesn't love it when a dinosaur comes down for breakfast? This cute dressing gown is sure to be a hit with all the little dino-lovers in your family, and although it needs a bit of skill to construct all the constituent parts, it's easier than it looks. Just don't tremble too much when it roars!

YOU WILL NEED

- 2.5 metres of Cotton towelling
- 30cm x 30cm of cotton fabric for lining pockets.
- 10 metres of bias binding tape 1" wide (depends how much you wish to bind the edges)
- 15cm of white felt for teeth and eyes
- Tiny piece of black felt for eyes

FINISHED MEASUREMENTS

Length (shoulder to finished leg hem): 81 cm

Garment size: age approx. age 5

FINISHING TIPS

Seam allowance is 1 cm unless otherwise stated.

Grey shading indicates the wrong side of the fabric.

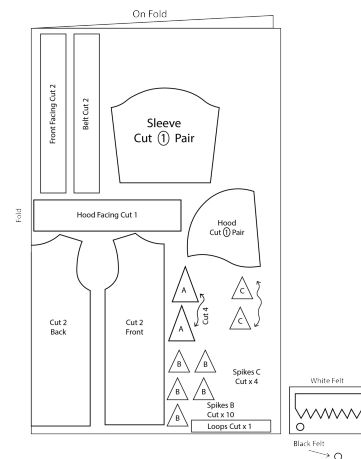
Finish the seams with cotton binding.

PATTERN

[DOWNLOAD PDF \(2Mb\)](#)

In your print menu, under size options, please select **ACTUAL SIZE**, instead of FIT TO PAGE.

Print **single sided** on **A4 paper** and follow the instructions on the front page, sticking the pieces together as indicated, by lining up the corresponding letters.

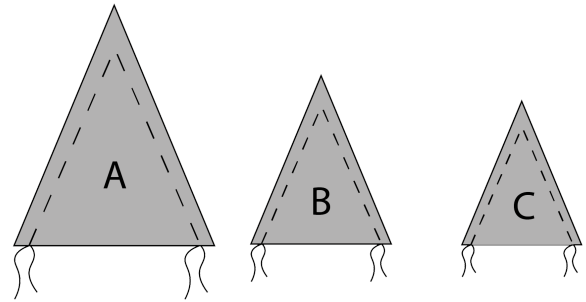


PIECES

- 1 pair front main
- 1 pair back main
- 1 pair Sleeve
- 1 x Hood Facing
- 1 pair front facing
- 2 x Belt
- 1 pair hood
- 2 x main pocket
- 2 x pocket lining
- 4 x spike A
- 10 x spike B
- 4 x Spike C
- 1 x teeth
- 2 x white felt eye
- 2 x black felt eye

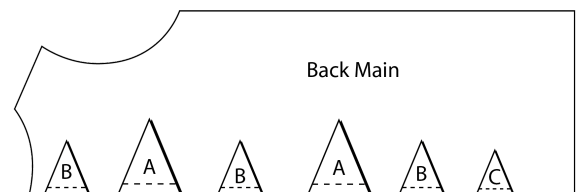
INSTRUCTIONS

1. Place all the spike pieces in appropriate pairs (matching the sizes), right sides together. Stitch along the two long sides of each pair, as shown. Snip at the point and turn through so that the right side is facing outwards. You should have two A-size spikes, 5 Bs and 2 Cs.

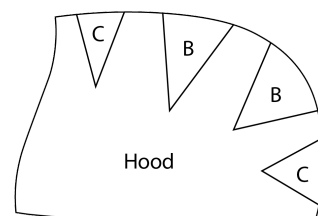


2. Mark the placement for the belt as shown on the pattern pieces, at the centre back. Then, using a ruler or other straight edge, mark the belt loops inside the seams so that they are in a straight line from the centre back. This should lie directly between two spikes. Place a pin or tack a stitch to indicate the correct position on both side seams – this will ensure that the belt ties around the dressing gown without going over the spikes.

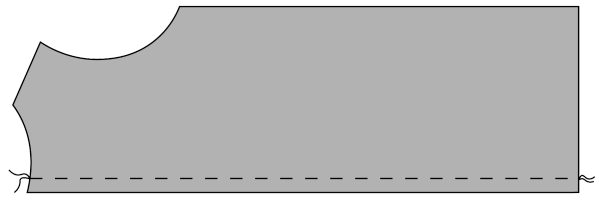
3. Lay one back piece right side facing up. Place the spikes according to the placement lines on the pattern and use basting stitch to tack them in place. Do the same with the hood (right side up), trimming the excess of the spike pieces away around the curved edge to neaten.



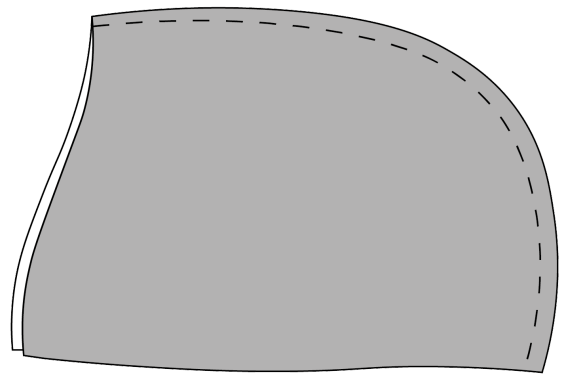
Baste within seam allowance.
(Approx 0.5cm from edge)



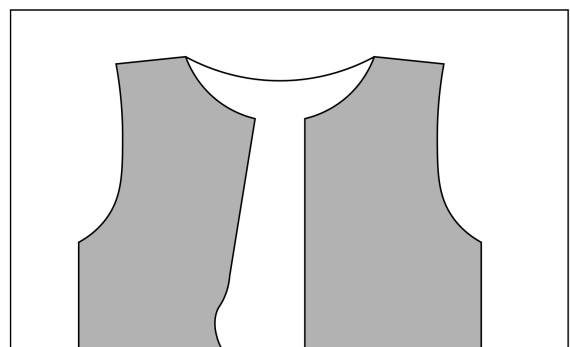
4. Place the other back piece on top, right side facing down (so that you have right sides together), sandwiching the spikes between the layers. Stitch along the centre back seam, as shown, then bind the centre back seam with bias binding to enclose the seam allowance.



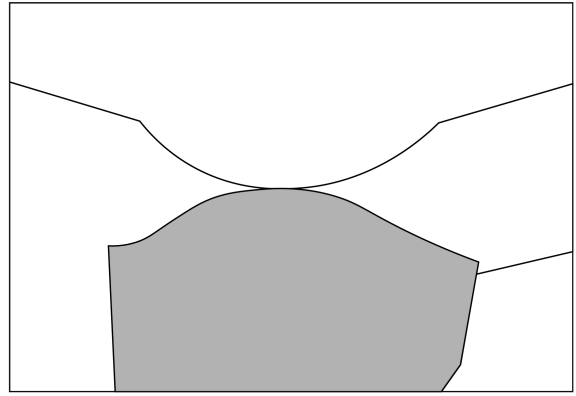
5. Place the second hood piece on top of the piece to which you've tacked the spikes, right sides together. Stitch around the long curved edge, then bind the seam together with bias binding.



6. Open out the gown back, right side up, and lay the coat front pieces right side down on top of it, aligning the shoulders. Sew the seams together and bind the seam-allowance edges with bias binding.



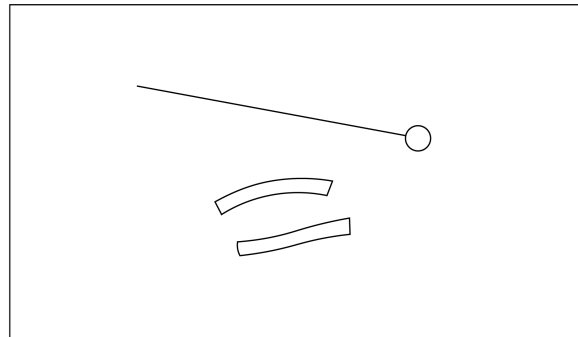
7. Place the right sleeve, right sides together, up to the right armhole. Match the notches and then sew the pieces together. Repeat for the left sleeve and armhole.



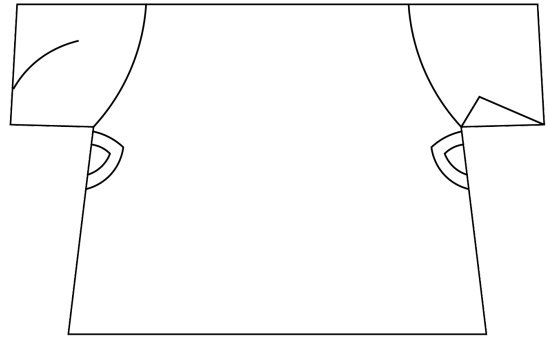
8. Fold the loop piece down its length, right sides together. Sew the long, open edge with a 0.5cm seam allowance.



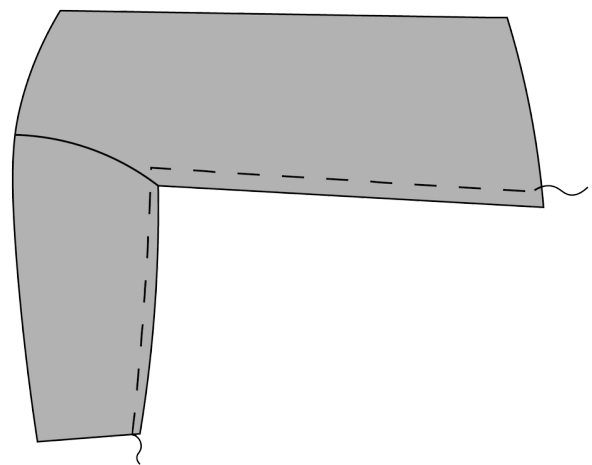
9. Turn the loop pieces right side out using a loop turner and cut two 10cm pieces.



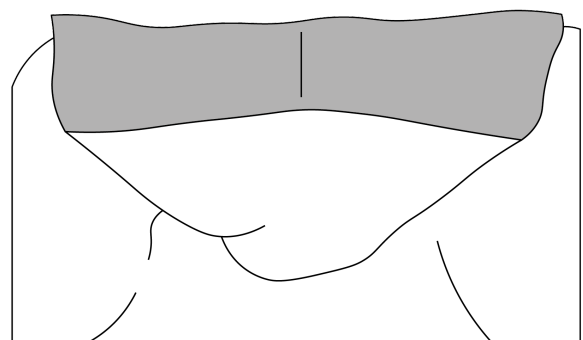
10. Pin one 10cm piece to each side seam at the back of the gown (right side out), either side of the belt loop marks, then use basting stitch to tack them in place.



11. On the wrong side, match and sew the side seams from the end of each sleeve to the hem of the gown (as shown), matching the seams at the underarms. Bind the seam-allowance edges with bias binding.



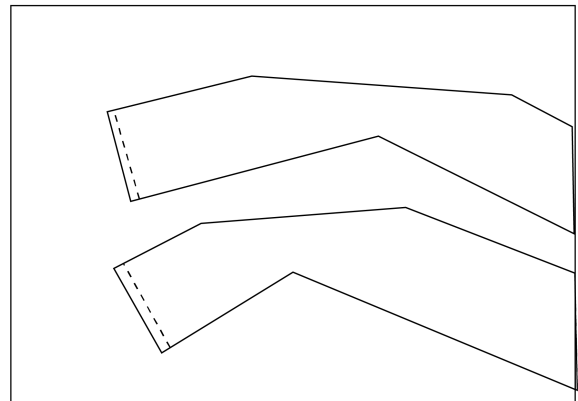
12. Pin the hood, right sides together, to the neckline of the gown body. Match the notches on the hood to the shoulder seams, and the centre seam of the hood to the centre of the back of the gown. Stitch in place, then bind the seam allowance edge with bias binding.



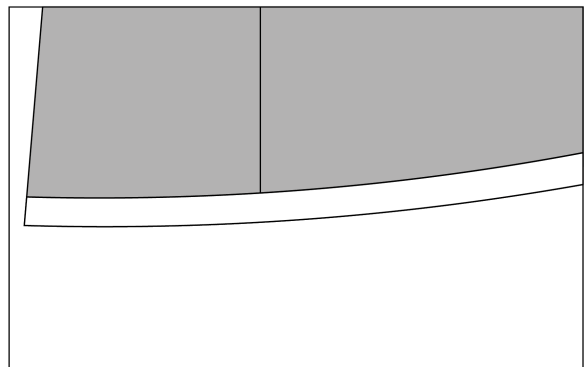
13. Sew the short ends of the hood facing between the two front facing pieces.



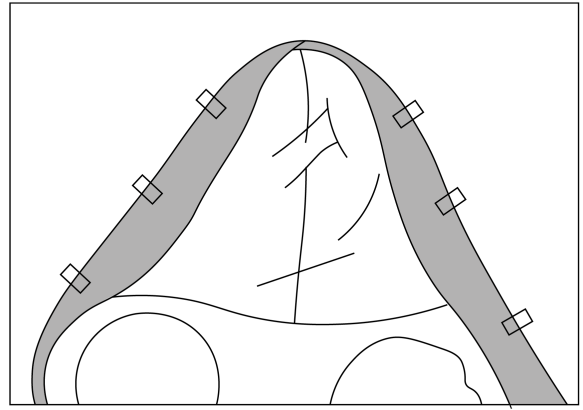
14. At the bottom hem of the front facing, turn the short ends right sides together and sew across the short end only. Repeat for other side, then turn so that the right side is facing outwards.



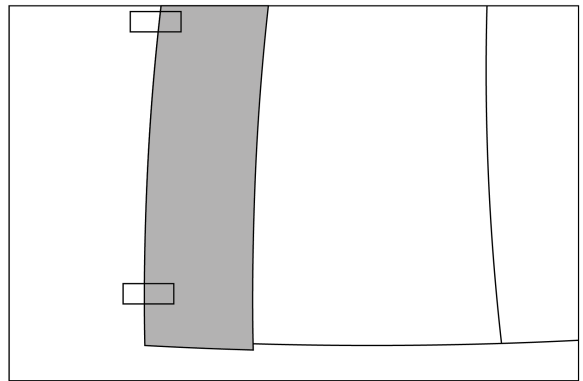
15. Turn the hem up by 2.5cm, with the wrong sides together, on the front and back gown pieces.



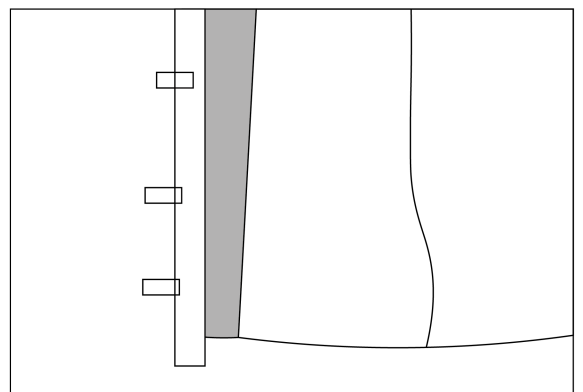
16. Fold the front facing strips in half lengthways, with the wrong sides together. Pin or use clips to the right side of the gown around the entire front opening, matching the seams on the facing to the neckline of the gown.



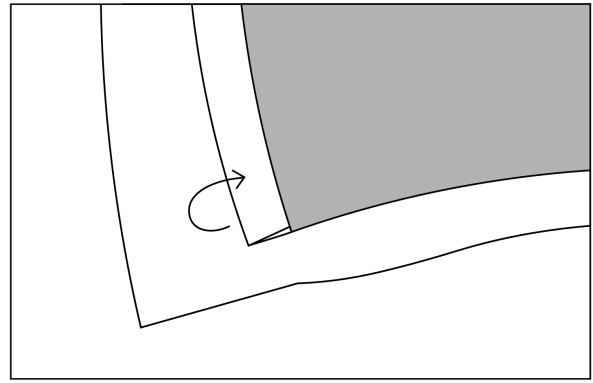
17. At the hem, align the bottom of the front facing exactly flush with the hem of the gown.



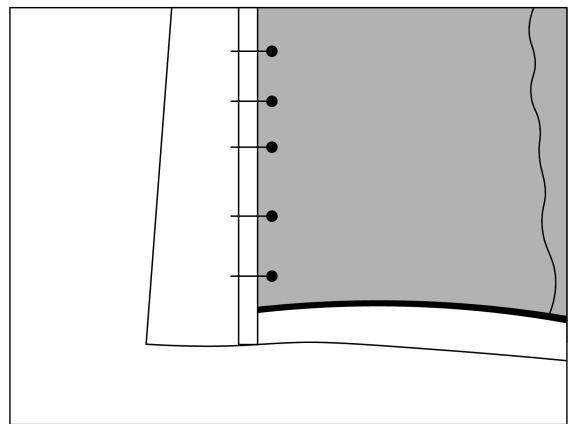
18. Leaving 2.5cm of seam binding extended beyond the hem and with the right side down, align the unfolded edge of the binding with the raw edges of the front facing and the gown. Pin together and sew all the layers to secure them around the entire opening of the gown.



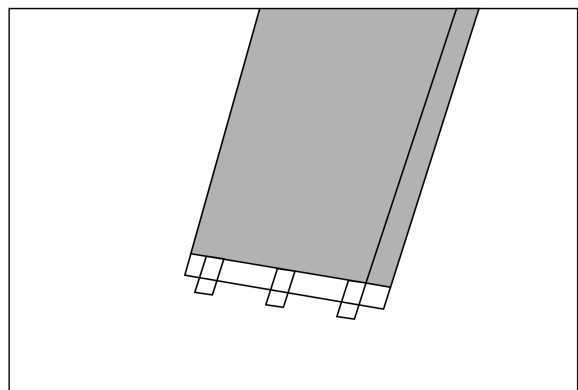
19. Turn the front facing out and, beginning at one end of the seam binding, fold the 2.5cm extension around the end of the seam allowance.



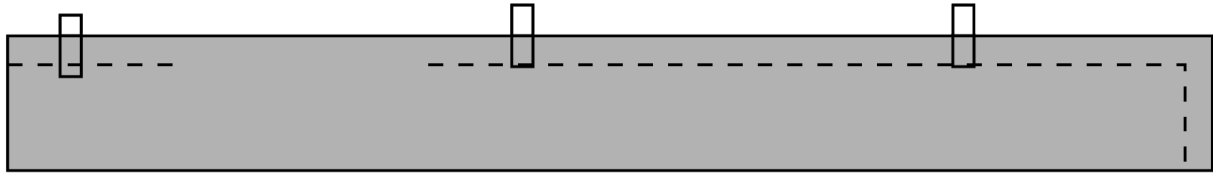
20. Turn the folded edge of the seam binding under and then over the trimmed seam allowance. Make sure the 2.5cm extension is properly tucked in and pin it securely around the entire opening of the gown. Edgestitch the seam binding close to the folded edge. The seam allowance of the facing and the gown should be enclosed and not caught in the stitching.



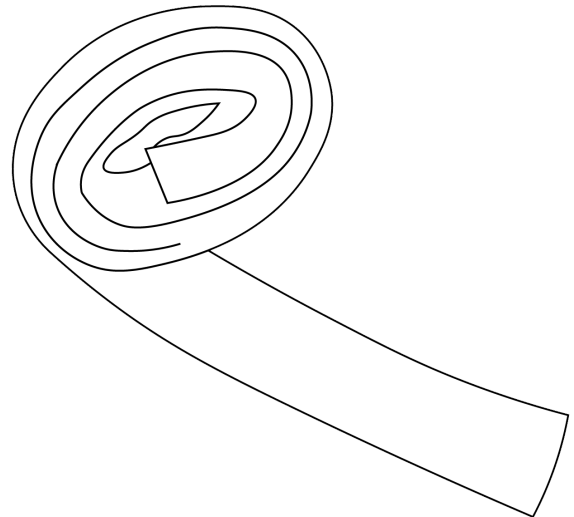
21. Turn the sleeve hem up by 1 cm, then fold it up by another 1 cm to create a double hem. Pin, then stitch the hem in place.



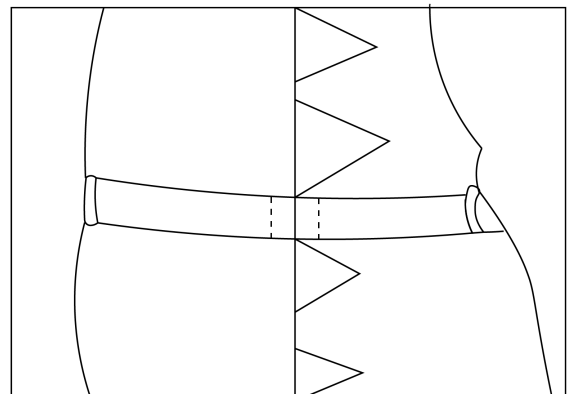
22. Make the belt. Place the belt pieces right sides together and sew one short end to form one long strip. Fold the belt strip in half lengthways, right sides together, then, starting at the fold, sew across one short end, pivot and sew down the long, open edge, leaving a 7.5cm opening at the middle of the belt to allow you to turn it through. Clip the corners.



23. Turn the belt through and topstitch 0.5cm in from the edge around the entire belt – this will also close the opening.

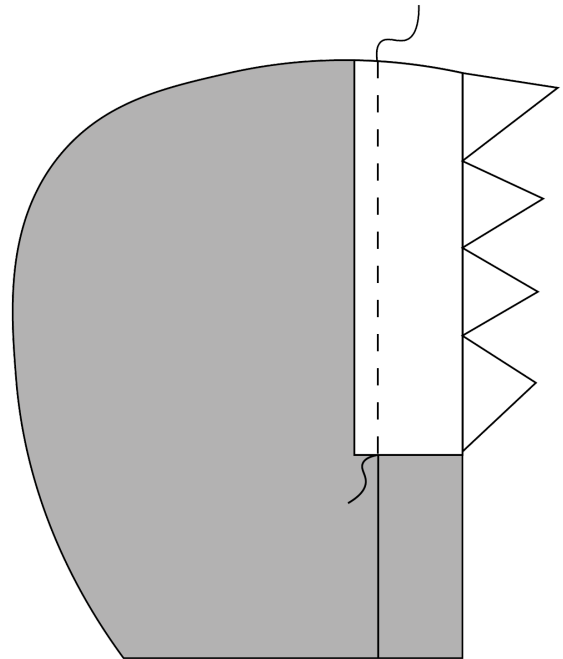


24. Place the gown right side up and open it out. Lay the centre of the belt exactly over the marked spot (where you placed the pin or tacked the stitch in Step 2). Sew two vertical lines 2.5cm either side of the centre point to fix the belt in place. Slide the belt through the loops on the side seams.



25. Cut out your teeth piece in white felt. Then position the piece in the centre of the front edge of the hood facing.

26. For the best finish, attach the teeth using a white bobbin and the colour of your hood on the thread pool. Sew the teeth piece in place in the ditch of the seam on the hood.



27. Finally find a good placement for your Dragon's eyes, either side of the hood, and hand stitch them in place, using matching thread.

